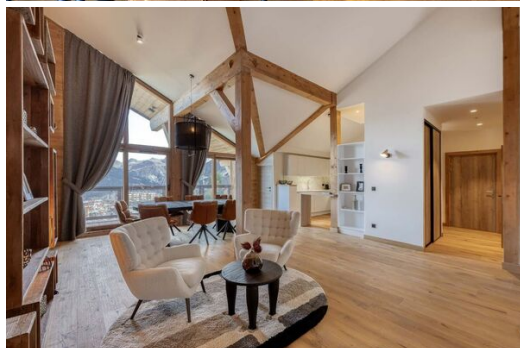


Elegant Apartment with Panoramic Views in Courchevel 1650

France, Courchevel, Courchevel 1650, Ariondaz

Apartment - REF: TGS-A4415



N° Bedrooms: 4	N° Bathrooms: 4	N° People: 8	N° parking's: 2	M² built: 168 m²	Terrace	Wifi	Fireplace
Mountain view	Communal lift	Dishwasher	TV	Washing machine	Ski Room		

Activities in resort

Skiing/Snowboarding	Cycling	Cross country skiing	Golf	Hiking	Mountain-Biking	Riding	Sailing
---------------------	---------	----------------------	------	--------	-----------------	--------	---------

New and Elegant Apartment with Panoramic Views and Ski Slope Access

Discover this new 168 sqm apartment, ideally located in the Bleuets residence at Domaine de l'Ariondaz, with easy access to the ski slopes.

You will immediately be charmed by its contemporary design, combining modernity with the warm atmosphere of a mountain chalet. Every detail has been carefully crafted to offer a luxurious and serene experience.

The apartment features a spacious living area, opening onto two balconies: a 14 sqm one facing northwest, and a 4 sqm one facing southeast, allowing you to enjoy panoramic 180° views of the surrounding mountains.

The fully equipped kitchen, living room, dining area, as well as a laundry room and a storage space, complete this functional and refined living space.

The four bedrooms, each with its own private bathroom, ensure comfort and privacy for every guest.

The residence also offers communal facilities, such as a game room with billiards, ping-pong, and table football, to enhance your stay.

In summary, this prestigious apartment perfectly combines elegance, comfort, and an exceptional location. Whether you are planning a family vacation, a getaway with friends, or a peaceful retreat, this space will meet all your expectations.

Key Features:

- New 168 sqm apartment
- Ideal location in the Bleuet residence, Domaine de l'Ariondaz
- Easy access to ski slopes
- Contemporary design with mountain chalet atmosphere
- Spacious living area
- Two balconies with 180° panoramic views (14 sqm northwest and 4 sqm southeast)
- Fully equipped kitchen
- Living room and dining area
- Laundry room
- Storage space
- Four bedrooms with private bathrooms
- Communal facilities: game room with billiards, ping-pong, and table football





